

# Looking for guidance to support co-managed fisheries?

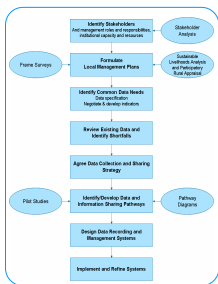
Small-scale fisheries play an important role in contributing to the livelihoods of millions of people in diverse ways, providing employment, fish for consumption, and financial revenues from the sale of fish. However, small-scale fisheries often suffer from lack of resources to support their management. Co-management is increasingly being promoted as a viable **process** to improve **management performance**. For this approach to be **effective and sustainable**, it must be based on sound knowledge and **understanding** of the **fishery and dependent stakeholders**. Described below are three tools that can help **improve this knowledge and understanding**:

1. Guidelines for developing information generation and sharing systems for co-managed fisheries;
2. Support for carrying out rapid stock assessments on fisheries for which little data are available;
3. Adaptive Learning where increasing our knowledge about the resource system becomes an objective of management.

## Tools Available

### Information Systems for Co-management

Information is vital to be able to make informed choices and decisions concerning the management of natural resources. Guidance is available to support the design of data collection and sharing systems for co-managed fisheries.



An eight-stage participatory process for designing data collection and sharing systems

Information may be required for:

- Policy
- Planning
- Implementation
- Evaluation

The guidance gives examples of data types and variables for each, provides an overview of how to design a data collection and sharing system, sources and methods to consider, and describes an eight-stage participatory design process. A Field Guide provides a summary and practical guidelines for putting data collection and sharing systems into practice.

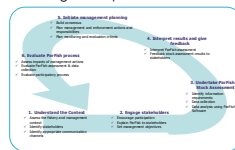


### parfish

PARTICIPATORY FISHERIES STOCK ASSESSMENT

Parfish is an approach to fisheries stock assessment that is particularly suitable for small-scale fisheries as it:

- allows a rapid assessment;
- does not require data recorded over long time periods;
- encourages the participation of fishers in the process;
- supports co-management and the development of management plans.



Stages involved in the Parfish approach

The Parfish Toolkit contains:

- Parfish Guidelines – describe the overall Parfish approach to assist fishers and other stakeholders enter a cycle of learning, management planning, implementation and evaluation;
- Parfish Software – allows data from the assessment to be entered and analysed;
- Parfish Software Manual – explains how to use the Software.

#### Participation:

- Parfish incorporates fishers' knowledge and preferences into the stock assessment
- Fishers are involved in discussing the assessment results and developing management plans.

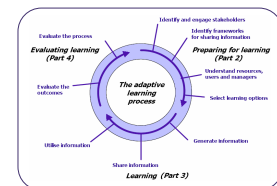


### adaptive learning

Adaptive Learning recognises the complex and dynamic nature of fisheries and their management arrangements. It is an approach to management that accepts that uncertainties exist, so that learning and reducing the uncertainties within the management process becomes an important management itself.

#### Principles of Adaptive Learning:

- Learning as an objective of doing;
- Learning by all;
- Sharing knowledge;
- Use of experiments to reduce uncertainties.



Further text / photo – where the AL Guidelines have been tested?

These products have been developed under the Fisheries Management Science Programme (FMSP), funded by the United Kingdom's Department for International Development (DFID) and managed by the Marine Resources Assessment Group (MRAG) Ltd. To obtain further information about any of these products, please contact:  
Tel: +44 (0) 7255 7755; Email: [enquiry@mrag.co.uk](mailto:enquiry@mrag.co.uk)  
or visit <http://www.fmosp.org.uk>